

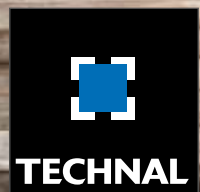
PERGOLA SUNEAL

THE MULTI-SEASON
LIVING SPACE



Architects: Giusti/Versini
Photography: Laurent Descloux

IMAGINE WHAT'S NEXT





Photographer: Sylvain Mille

PERGOLA SUNEAL / THE MULTI-SEASON LIVING SPACE

LIGHT AND HEAT MANAGEMENT

Pergola SUNEAL, designed for private or professional use, offers functionalities to effectively control the natural light inputs by optimizing shading and ventilation accordingly to the seasons.

A VARIETY OF CONFIGURATION

The Technal pergola SUNEAL allows to regulate the sunshine and the thermal comfort, thus enhancing the buildings value and offering multiple possibilities to take full advantage of the outdoor spaces: terrace, garden, swimming pool, spa, courtyard, passageways ... Pergola SUNEAL is adaptable to all installation configurations and constraints of implantation while offering a real multi-season living space.

STRAIGHT AND CLEAN LINES

On the aesthetic side, the Pergola SUNEAL offers a sleek design with straight lines and elegant finishes. Combined with numerous customization accessories, this extension of the building will bring to its occupants comfort and conviviality.



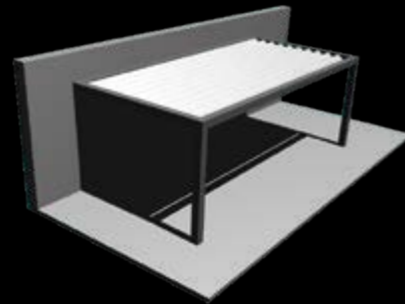
Photography: DR Technal

SUNEAL

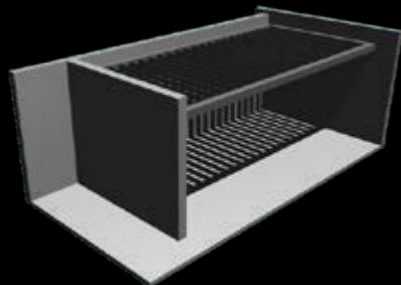
/ THE MULTI-SEASON LIVING SPACE



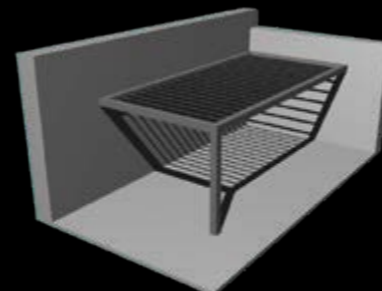
Isolated



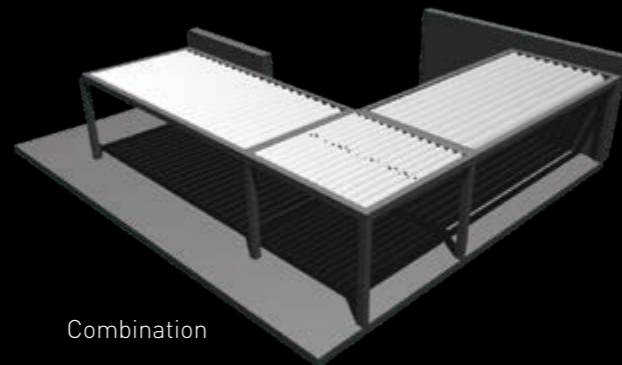
Leaned on the wall



Between walls



In angle



Combination

KEY FEATURES AND INNOVATIONS

LARGE DIMENSIONS

- Posts of 140 x 140 mm
- Maximum dimensions:
 - Version 1 module: Width x depth = 4,5 x 6,5 m
 - Version 1 modulo with transom: Width x depth = 7 x 4 m

PERFORMANCES

- Motorization tested over 20.000 cycles
- Tested in wind tunnel at CSTB*:
 - 230 km/h in version leaned to the wall with flat blades
 - 210 km/h with curved blades

* Scientific and Technical Center of buildings PV N° EN-CAPE 14.077 C

COMFORT OF USE

- Adaptable to all configurations and installation constraints
- Thermal optimization form shading and ventilation in the summer, as well as the solar contributions management in winter, a real barrier to rain
- Silent movement of the blades
- Blades installation in parallel or perpendicular to the facade enhancing the solar contributions
- Control centre allowing to combine multiple functions on the same remote control (blades, LED lighting, blinds ..)

DESIGN AND AESTHETICS

- Elegant design ideal for contemporary and more traditional constructions
- 3 types of blades available to adapt to your desires (curved, flat or extra-flat)
- Wide choice of colors TECHNAL and possibility of having a different colour for the structure and the blades
- Elegant finishes without visible screws
- Rainwater discharged in post

EASE OF INSTALLATION AND MANUFACTURING

- 100% of the cuts are straight
- Blade driving profile pre-drilled
- Post drilling jig
- All mounting brackets are made of powder-coated stainless steel (electrolytic torque)
- Screw assembly
- Removable blades independently of one another

FINE DESIGN AND ENERGY SAVING

CLEAN LINES AND NEAT FINISHES

- Straight and clean lines for a harmonious result
- No visible screws on the whole structure
- Additional profile positioned on top of the blades to hide the movement of the upper part
- Possibility of positioning the post flush with the structure or offset to 1/3
- The SUNEAL Multi-Season Living Space is available in all Technal shades (it is possible to paint the blades in a different colour than the structure)



Flush post

Offset post



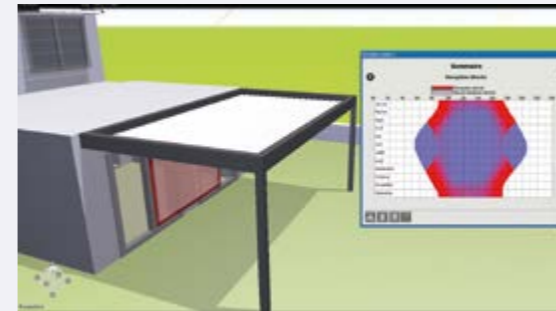
Curved blade

Flat blade

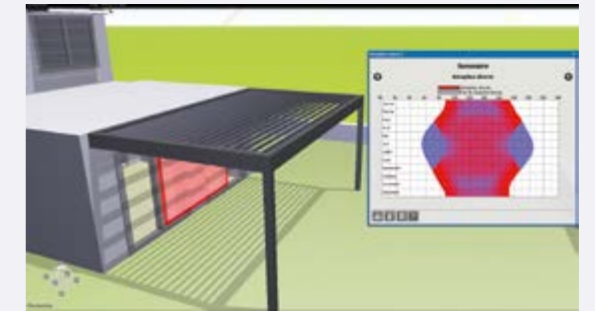
Extra-flat blade

ENERGY REQUIREMENTS MONITORED

The installation of pergola SUNEAL contributes to reduce energy requirements, especially in summer. Indeed, it lowers the air conditioning needs for adjoining rooms, while protecting façades and outdoor furniture from sun and rain alteration. In winter, it allows to optimize the light and heat inputs.



Shade on the south facade: closed parallel blades. In summer, the goal is to be protected from the sun's rays.



Sunshine on the south facade: parallel blades open at 130°. In winter, the objective is to capture the sun's rays.



COMFORT AND SAFETY ON A DAILY BASIS

EASY HANDLING

- Soft and silent blade movement
- Integrated motorisation in the upper part of the structure
- Blade orientation up to 130 °
- Handling of the blades by remote control, RTS compatible system (example: Tahoma SOMFY)

COMPLEMENTS

- Motorized Stores
- Wind, rain and temperature sensors
- LED lighting or spotlights
- Compatible with
 - SUNEAL shadings
 - Technal Sliding systems
 - Folding door AMBIAL

RELIABILITY OF ELEMENTS

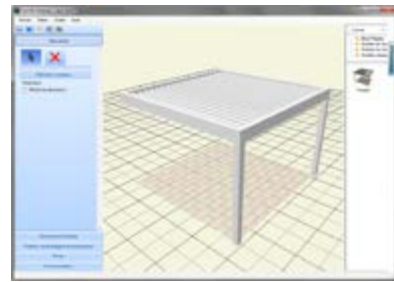
- Motor with stainless steel components, resistant to rain and dust (class IP67)
- Exceptional durability with minimal maintenance (aluminium standard)
- Motorisation tested with more than 20,000 cycles
- Fixing on wall or on terrace using stainless steel plates
- Resistance up to 230 km/h without breaking point (test made with flat blades)



TECHNAL CONFIGURATION SOFTWARE

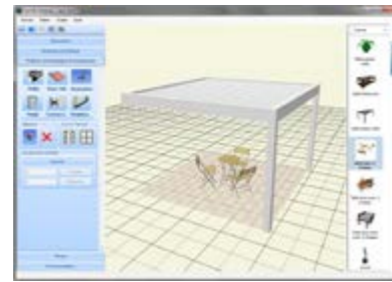
Thanks to the Technal configuration software, it is possible to design in 3D in a few clicks a project of pergola SUNEAL. By importing a photo of your choice, you can immediately see the final rendering of the project.

PERGOLA SUNEAL CUSTOMIZED IN 5 STEPS



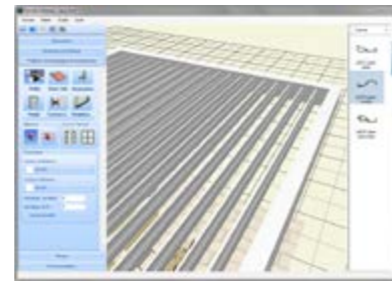
1. Model

Creating the model, configuring the structure and posts.



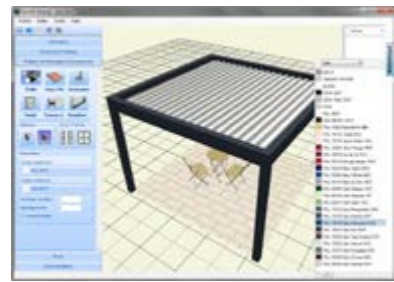
2. Customization

You can simulate location of accessories at desired locations.



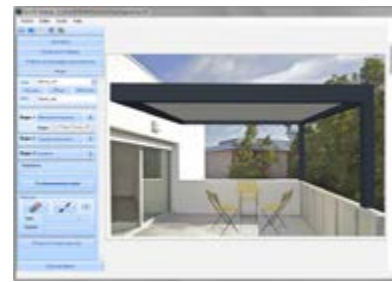
3. Blades

Choice of blades types (flat or curved), orientation in relation to the facade and in the open or closed position.



4. Colours

The entire Technal colour palette available. It is possible to do the blades with a different colour than the structure.



5. Visualization

Download a photo and design in 3D the pergola to position it ideally to the construction as realistic to possible.



Architectes : Giusti/Versini
Photographe : Laurent Descloux

MATERIALS AND PARTS

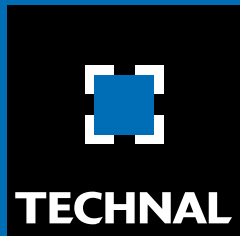
As with all Technal systems, only the highest materials and components are used to minimise maintenance and ensure long-term performance.

- The aluminium profiles are extruded from alloys 6060 Building compliant with EN 12020, EN 573-3, EN 515 and EN 775-1 to 9.
- Fittings are cast from EN 12844 compliant Zamak 5.
- Screws are made from stainless steel.

FINISHES AND COLOURS

A wide range of finishes and colours is available to meet individual project requirements, enhancing existing buildings and offering architects and designers greater design freedom:

- Natural anodised in accordance with EN 123731: 2001.
- Polyester coating finishes in a wide range of colours in accordance with "QUALICOAT" instructions.
- PERGOLA SUNEAL is also available in acquired finishes with exclusive Technal colours for a stylish and contemporary look.



IMAGINE WHAT'S NEXT

270, rue Léon-Joulin
BP 63709 - 31037 Toulouse cedex 1
Tél. 05 61 31 28 28 - www.technal.com



By  Hydro