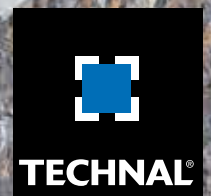


ARTLINE XL

LIGHT IS MORE



Architect: Daniel Isern
Photography: Adrià Goula



By  Hydro



ARTLINE XL

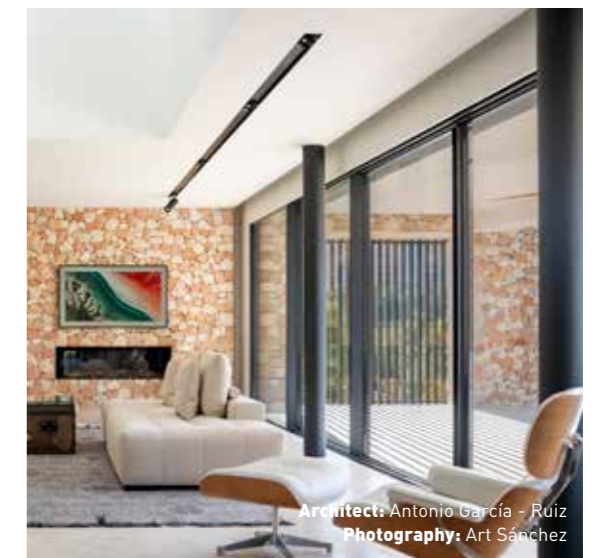
/ LARGER SIZE PLUS
LESS ALUMINIUM EQUALS
MORE LIGHT

BREAK AWAY FROM THE COMMONPLACE

The worldwide architectural trend in recent years is toward large glazed surfaces. To ensure user comfort, ARTLINE XL allows users to smoothly move glass panels of up to 1200 kg per pane. These panes are rated for thermal conductivity below 1 W/m²K, guaranteeing mechanical resistance against wind pressure and disguising the frame profiles, building them into the masonry when required.

ARTLINE XL, A SLIDING DOOR WITH IMPRESSIVE ADVANTAGES

The stunning look is just the beginning. ARTLINE XL delivers a series of benefits and guarantees worthy of a world-class product. Both in terms of thermal insulation and configurations, ARTLINE XL strikes that difficult balance between transparency and comfort.



Architect: Antonio García - Ruiz
Photography: Art Sánchez

ARTLINE XL's program makes it possible to work at one or more levels.

ARTLINE XL

/ A GREAT SLIDING DOOR



FEATURES

LARGE DIMENSIONS

- Height and length depend on the proportions and the wind's dynamic pressure/suction, so these must be calculated on a project-by-project basis. We do not recommend exceeding the ratio of 2.5/1 for easy handling of the pane.
- The system boasts high-inertia profiles for panes > 3 m tall. Inertia calculations must take into account the size of the pane and wind pressure.
- The maximum weight per pane is 1200 kg. Each pane has two double tandems of stainless steel rollers.
- One tandem is for up to 500 kg and another is for > 500 kg to 1200 kg.
- It is advisable to motorise panes weighing over 500 kg.

THERMAL PERFORMANCE

- $U_w < 1.0 \text{ W/m}^2\text{K}$ for sliding doors measuring 3000 (H) x 2800 (L) mm.

SEALING PERFORMANCE

- Air permeability: EN 12207 C3.
- Watertightness: EN 12208 E750.
- Wind resistance: EN 12210 C3.

ACOUSTIC PERFORMANCE

- $R_w [C, Ctr] = 37 [-1; -1] \text{ dB}$
Dimensions H3950 x L2400 mm.

SAFETY

- EN 13155 class 1 mechanical test for resistance to manoeuvring forces and class 4 for impact resistance.

DESIGN

- Frames can be built into the interior and exterior walls.
- Vertical uprights at the intersection of the 38 mm or 26 mm panes. Aluminium finish when viewed from the front (two versions to choose from).
- Vertical side uprights including a handle and built-in fastener, 30 mm wide seen from the front.

ACCESSIBILITY AND COMFORT

- Ground-recessed for total access comfort. Provisions should be made for below-ground drainage.
- Optional motorization in all applications.

FASTENERS

- Multipoint closing system. There are three variants: automatic closing, fastener closing and closing with key from the inside.



ARTLINE XL

/ AESTHETIC LIGHTNESS

HIDDEN FRAMES

The frames (side, floor and ceiling) can be recessed and disappear almost completely from view. This way, only the vertical cross sections of the panes remain visible, featuring a front section that can be 38 mm or 26 mm wide (as per client specification), and a section behind it that varies depending on the inertia required to support the wind pressure according to the window surface area. This design translates into a slenderness that works beautifully in architectural projects aiming at the utmost transparency.



View of the open pane, showing upper frame built into the false ceiling.



Detail of the central overlap of two panes, showing lower frame flush with the outer and inner pavement. The depth of the pane upright depends on the pressure it must support so that the glass does not exceed its stress threshold.

FREE ANGLE

ARTLINE XL allows users to configure the frame to corner at 90°, without the need for a corner upright. When the panes are opened, the corner opens wide up, blurring the line that separates the inside from the outside. When closed, the panes on either side connect, sealing out water and air.



©Sapa Building Systems

Corner panes without frame upright.



ARTLINE XL

/ SAFE AND COMFORTABLE
GLAZED WALLS

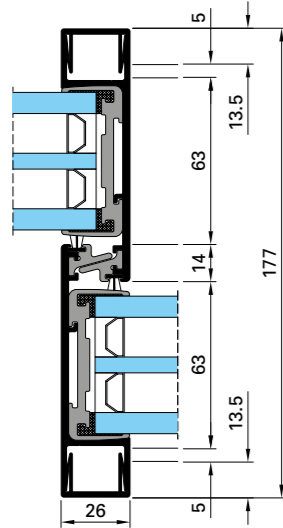
The glass alone cannot slide, maintain tightness and ensure mechanical resistance to wind pressure. ARTLINE XL manages to convert these large glazed walls into a resistant wall—tested for watertightness, air permeability and intrusion resistance. Its system design has passed stringent certification tests.



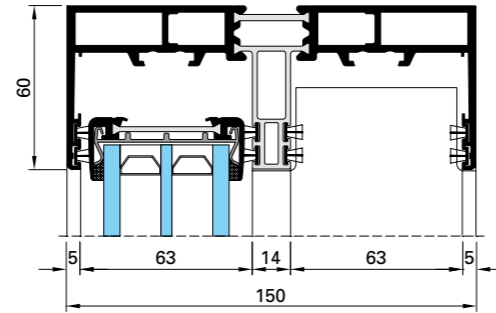
These large glazed structures slide smoothly even when they weigh 1200 kg * (it is advisable to motorise panes weighing over 500 kg). People with reduced mobility will benefit from the possibility of motorising all elements.

CROSS-SECTIONAL DRAWINGS

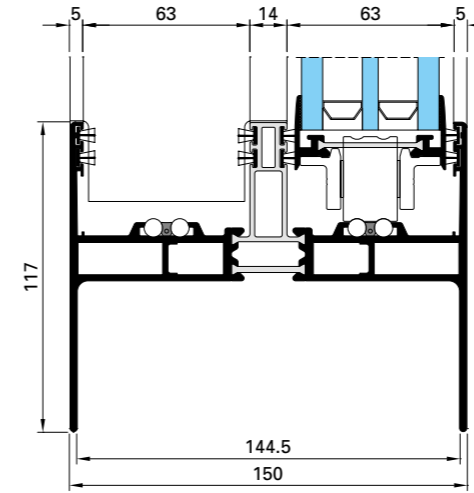
CENTRAL PANE OVERLAP.
26 mm EDGE



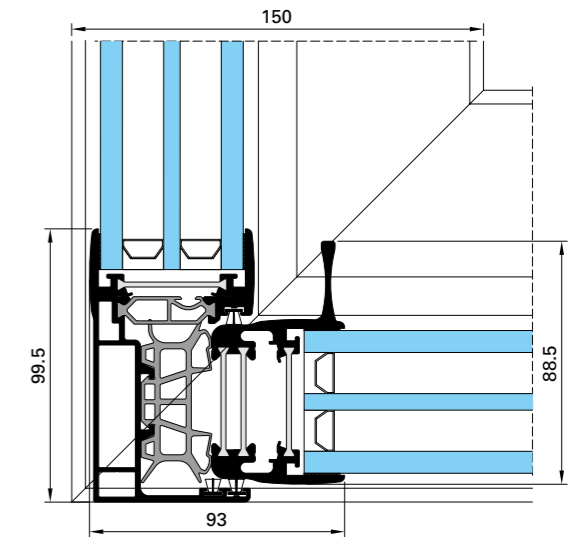
CONTACT OF PANE AND UPPER FRAME.
GLAZING FROM 40 TO 52 MM



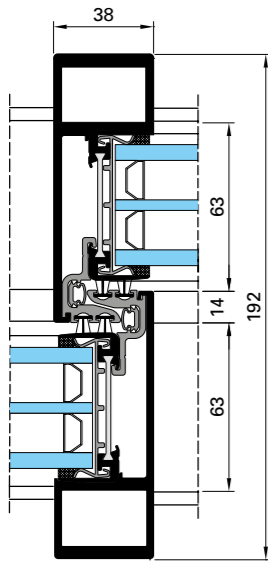
CONTACT OF PANE AND LOWER FRAME.
DOUBLE ROLLER UP TO 1200 KG PER PANE



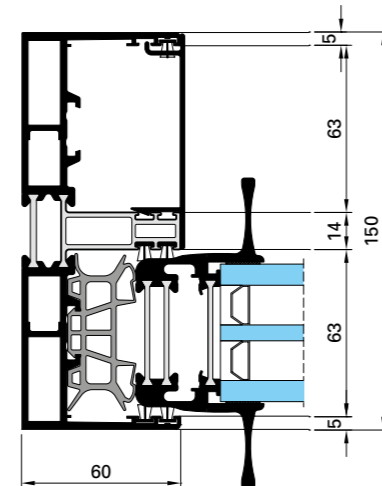
90 °CORNER CONTACT
GLAZING FROM 40 TO 52 mm



CENTRAL PANE OVERLAP.
38 MM EDGE

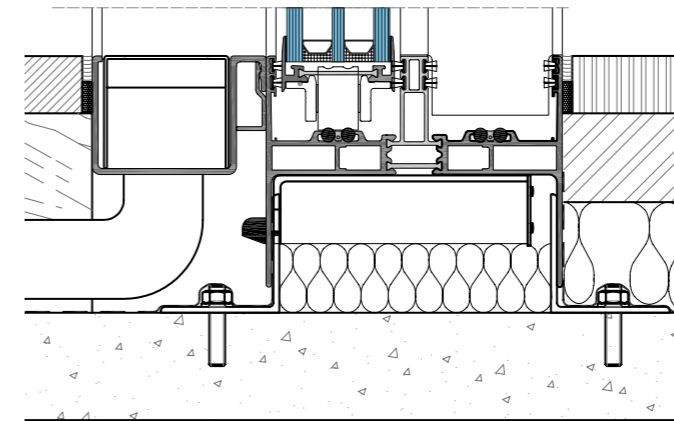


SIDE CONTACT BETWEEN PANE AND FRAME.
GLAZING FROM 40 TO 52 MM

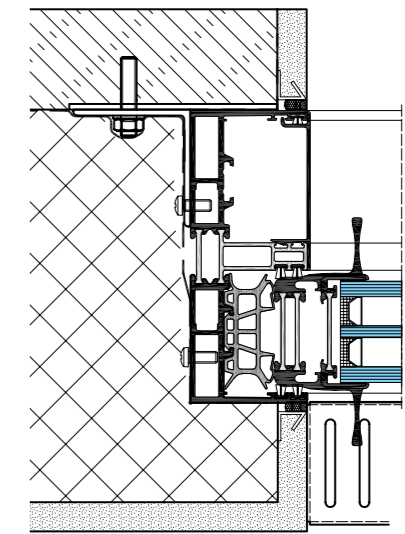


/ MASONRY EMBEDDED CONCEPT

LOWER FRAME RECESSED IN THE FLOOR



SIDE FRAME HIDDEN IN THE WALL



APPLICATIONS

All configurations are motorisable. It is advisable to motorise panes weighing > 500 kg for safety reasons.

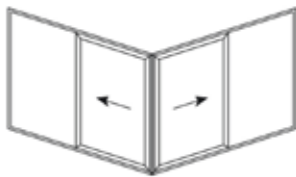
2 rails



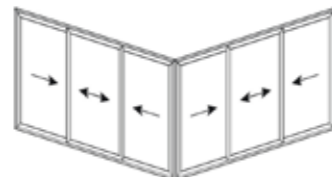
3 rails



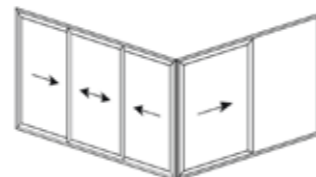
2 rails



3 rails



Combination of 2 and 3 rails



RATINGS

| ABC RATINGS (AIR, WATER, WIND) | | | | |
|--|--------------------|---|------|----|
| Application (sliding window) | Dimensions L x H | A | E | V |
| 2 leaves slide+slide | 4000 x 2800 | 3 | E750 | C3 |
| 2 leaves slide+slide | 3313 x 3789 | 3 | 4A | C2 |
| 4 leaves fixed+slide+slide+fixed | 5045 x 2857 | 3 | 7A | C2 |
| 4 leaves (90 degree) fixed+slide+slide+fixed | (2400+1156) x 2500 | 3 | 8A | C3 |
| 2 leaves slide+slide | 4000 x 4500 | 4 | 9A | C3 |

| THERMAL RATING | | | |
|-------------------------------|------------------|------------|-----------|
| Applications (sliding window) | Dimensions L x H | Uw (UH) | Ug (UV) |
| 2 leaves | 3000 x 2800 | 1,09 W/m²K | 0,7 W/m²K |
| 2 leaves | 3000 x 2800 | 0,91 W/m²K | 0,5 W/m²K |

It varies depending on the glass Ug value.

| ACOUSTIC RATINGS | | | |
|-------------------------------|------------------|----------------|---------------------------|
| Applications (sliding window) | Dimensions L x H | RW (C; Ctr) | Glass |
| 2 leaves slide+fixed | 4509 x 2788 | 42 (-2; -5) dB | 12VSG/12Ar/6/12Ar/8VSG |
| 2 leaves slide+slide | 3950 x 2400 | 37 (-1; -1) dB | 66.2Si/12Ar/6/12Ar/44.2Si |
| 2 leaves slide+slide | 3950x2400 | 34 (-1; -1) dB | 8/12Ar/4/12Ar/44.2Si |



Each pane slides on two sets of wheels, like the one pictured. Each trolley has four double marine-quality stainless steel wheels that slide on a double stainless steel rail supporting 500 kg of weight, requiring minimal pushing effort. The 8-wheel roller can manage up to 1200 kg. It is advisable to motorise panes weighing > 500 kg.





Architect: Daniel Isern
Photography: Adrià Goula

MATERIALS AND COMPONENTS

As with all Technal systems, only high-quality materials and components are used to ensure reduced maintenance and optimal long-term performance.

- Extruded 6060 alloy aluminium profiles as per standard NBN EN 573-3 according to the tolerances of standard NBN EN 12020.
- Accessories are made of aluminium or aluminium alloy.
- The window assembly features EPDM seals.
- The screws are made of stainless steel.

FINISHES

ARTLINE XL boasts a wide array of finishes and textures to let architects and decorators choose the right solution for their design and meet the demands of both new construction and rehabilitation projects.

- Anodized as per QUALANOD Quality Label specifications.
- Lacquered with a wide range of colours as per QUALICOAT Quality Seal specifications.



IMAGINE WHAT'S NEXT

www.technal.es

