

SAPA FOLDING FRENCH WINDOW 1086

HIGH THERMAL PERFORMANCE AND
EXCELLENT WEATHER RESISTANCE



sapa:

By  Hydro

Sapa Folding French Window 1086

This stunning new addition to the Thermo 86 family has a unique and inventive design where traditional hinges are replaced with continuous hinges. The innovative hinges are integrated in the aluminium profiles which mean that there are no bulky or unsightly hinges to disrupt the contemporary sightlines. As they run along the entire window sashes, forces are distributed evenly and without risk of warping.

The innovative feature provides not only stability but also prevents finger trapping, gives unbroken seal lines as well as minimal needs for adjustments and maintenance.

The window operates quietly and has a neat and clean appearance with no visible screws. By folding the window sashes together the window opens up the wall almost completely. The precision and smoothness is achieved through an integrated polyamide head guide track and heavy duty wheels running on a track rail of stainless steel.

Optimum fit is done through hidden adjustment frames giving the window a very smooth ride and a perfect finish.

A folding French window in aluminium with excellent weather performance and good thermal insulation. Innovative technology provides you with stylish design and good comfort.

Ideal for homes, balconies, patios, conservatories, restaurants, shops, kiosks and offices.



Sapa folding French window 1086 for inwards and outwards opening is available with three sill options depending on the performance you wish. It is fully compatible with other window and door products from the Sapa Thermo 86 family.

- Continuous Hinges - Inobtrusive aesthetics, no adjustment required and prevents finger trapping
- Concealed wheelset at the bottom. Track rails in stainless steel
- Adjustable sash
- The pass door is fitted with an espagnolette lock
- Polyamide Head Guide Track for improved thermal performance and smooth/quiet operation
- Multicavity Outer Frame for good thermal insulation
- Unique Combined Shootbolt & D Handle - Key lockable & Shootbolt and pull handle in one
- Available in 3,4, 5, 6 & 7 pane options, types 330, 431, 550, 651, 633 and 770.

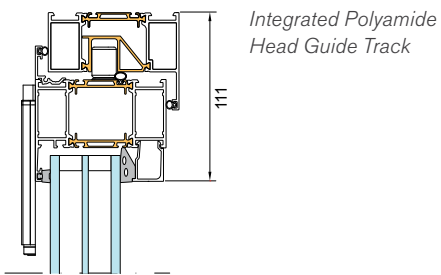
Sapa Folding French Window 1086

Glass thickness	Double- or triple-glazed: up to 64 mm		
Profile depth	86 mm		
Sash width, max	1100 mm		
Sash height, max	2750 mm		
Vent weight, max	100 kg		
Pane options	Combine up to 7 folding doors		
Fittings	Pass door: available with lockable handle. Folding door: integrated continuous hinges, magnetic seizure locks the door package in open position.		
Wheels and track rails	Stainless steel		
Sill height	18 mm / 33,5 mm / 74 mm		
Finishing	Powder coating or anodising		
Water tightness	Up to class E900 according to EN 12208		
Air permeability	Up to class 4 according to EN 12207		
U-value	U-value glass, U_g i W/m ² K, middle point		
	$U_g=0,5$	$U_g=0,6$	$U_g=0,7$
3-segment 3500x2460 mm	$U_w=0,9$	$U_w=1,0$	$U_w=1,1$
5-segment 5730x2460 mm	$U_w=0,9$	$U_w=1,0$	$U_w=1,1$

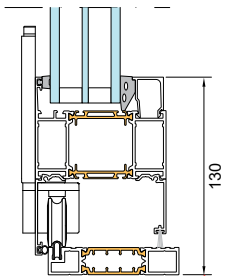
Theoretical U-value calculation with allowance for glass, profile proportion and linear factors for edge zone effects according to EN 10077-1/2.



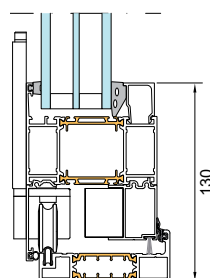
Sapa 1086 folding French window, cross sections



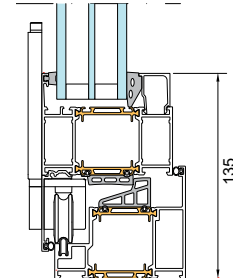
*Integrated Polyamide
Head Guide Track*



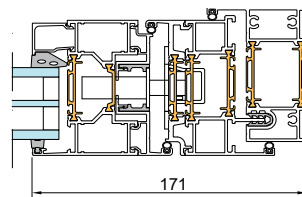
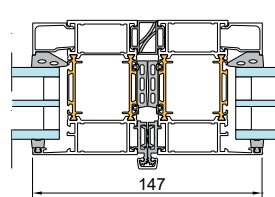
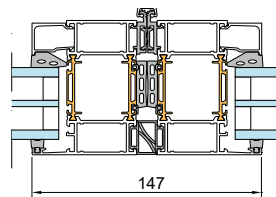
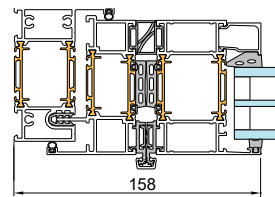
*Concealed wheelset
at the bottom
Low sill: 18 mm*



*Concealed wheelset
at the bottom
Medium sill: 33,5 mm*

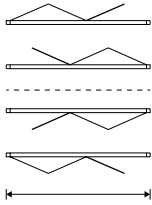
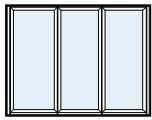


*Concealed wheelset
at the bottom
High sill: 74 mm*

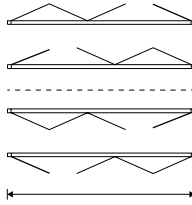
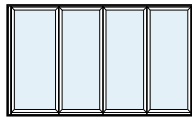


Innovative Sapa feature: Integrated continuous hinges

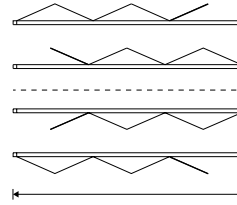
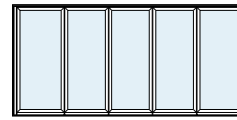
Sapa Folding French Window 1086



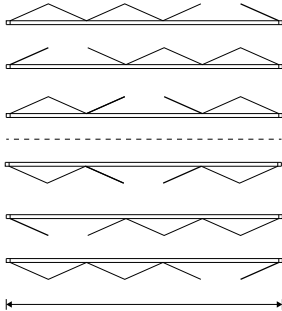
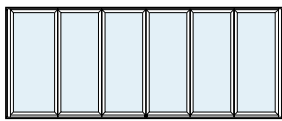
FOD width max 3508 mm
Clear opening width = FOD-487 mm



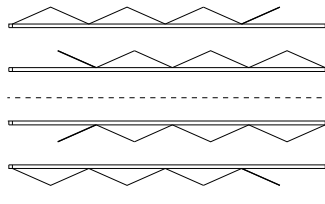
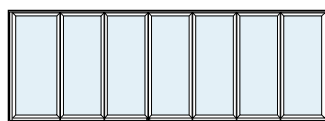
FOD width max 4611 mm
Clear opening width = FOD-559 mm



FOD width max 5734 mm
Clear opening width = FOD-685 mm



FOD width max 6600 mm
Clear opening width = FOD-757 mm



FOD width max 6600 mm
Clear opening width = FOD-883 mm

FOD = frame outer dimensions

FOD height = max 2800 mm.

Clear opening height with

low sill = KYM - 82 mm

medium sill = KYM - 97,5 mm

high sill = KYM - 138 mm

Handles



Handle pass dorr,
inside only, lockable
Art. no. 16436 right
Art. no. 16437 left



Handle pass door,
inside/outside, can
be supplemented with
separate cylinder
Art. no. 16434 right
Art. no. 16435 left



Shootbolt & D Handle,
Inside, lockable
Art. no. 16469





sapa:

By  **Hydro**

Hydro Building Systems, region North

Sweden

SE-574 81 Vetlanda
T +46 (0)383 942 00
E sapa.se@hydro.com

Norway

NO-2027 Kjeller
T +47 63 89 21 00
E sapa.no@hydro.com

Denmark

DK-8240 Risskov
T +45 8616 0019
E sapa.dk@hydro.com

Finland

FI-02180 Espoo
T +358 (0)9 867 82 80
E system.fi@hydro.com

Lithuania/Estonia/Latvia

LT-02244 Vilnius
T +370 (0)5 210 25 87
E sapa.lt@hydro.com

Poland

92-620 Łódź, Polska
T +48 (0)42 683 63 73
E sapa.pl@hydro.com

sapabuildingsystem.com